



Throughout the decades we have developed our products to cater for almost any requirement, from our Acoustic and CE marked Security Rated range (LPS1175 DS1, 2 and 3) to our ultra modern, aesthetically pleasing, fire rated SlimLine range. Our doors are fitted by our experienced fitters and come with a manufacturer's guarantee.

Our traditional door ranges can be manufactured with a fire rating of over 6 hours (BS476), a SR3 security rating, acoustic dampening of up to 50 db, 100% flood proof and all are designed to the end users specification. The Slimline Schuco Jansen range offers up to 120 minutes fire rating along with a high security rating and low U values.

All products are available in any BS or RAL colour and are typically manufactured and ready for fitting within 10 working days.

With our masses of experience within the Industrial and Commercial Door industry we offer the full package, right through from door planning, site surveys, door design, door production, door assembly to installation.

We look upon our customers problems as our own, and will endeavour to solve it by producing any door of any gauge of material to the highest specification. Using the latest CAD/CAM technology, we can produce standard doors or unique bespoke specials with equal ease and all to the highest quality.

To add to our extensive product range and our project management service we also provide our clients with a price match promise, same day quote service and a manufacturers guarantee thus making us the best possible choice for any door requirement.





## CONTENTS

- 4** Steel Personnel Doors
- 6** Shutters
- 8** Slimline Glazed Steel Doors
- 10** Slimline Glazed Aluminium Doors
- 12** GRP/Composite Doors
- 13** Stock Doors
- 14** Fire Rated Doors
- 15** Security Rated Doors LPS 1175 1,2 & 3
- 16** Flood Rated Doors
- 18** Acoustic Doors
- 20** Project Management & Support Services





# Steel Personnel Doors

## Custom Steel Door

A popular range as each steel door is engineered and manufactured to customers specification, and can be manufactured in 1.2mm, 1.5mm or 2mm Zintec Steel with a double skin construction. Custom steel doors offer the flexibility to specify a wide range of features ensuring that each door is truly unique for its application.



## Fire Rated Steel Door

Our Fire Rated Steel Doors have been independently 3rd party tested and offer certification in excess of 6 hours. We are able to offer a large range of hardware options as the door has been tested both 'latched' and 'unlatched'. The door is manufactured from 1.5mm zintec steel as standard making it both strong and secure.



## Standard Steel Door

Standard Steel Doors are manufactured from 1.2mm Zintec steel, they are a flexible bespoke general purpose steel door that can be used both internally and externally and a popular choice for personnel and fire exits.



## Security Rated Steel Door

Safety and Security is increasingly becoming a concern, we offer LPS 1175 level 1, 2 and 3 tested steel doors that are available as single or double doors (outward opening). The security steel doors have been vigorously tested by the LPCB to withstand attack and unauthorised entry with heavy duty tools. A large variety of locking systems can be specified including manual and electric as well as a wide choice of glazing units, louvre panels and removable transoms are also available.

## Slimline Glazed Door

Our Slimline Glazed Door offers a range of profile sections which are suitable for both internal and external doors, screens and windows where strength yet elegance are paramount. The fully welded steel framework provides a robust carrier for all types of glazed units and allows easy access for cable ways for powered locks, alarm contacts and entry systems.

The Slimline Door range offers a fire rating, security rating, low U values and high acoustic dampening, this makes it ideal for schools, offices, public buildings and social housing projects.



## Flood Proof Steel Doors

Our Flood Proof Steel Doors have been designed to offer protection against both flood and unauthorised entry. Available in both single and double steel doors (outward opening) with unique seals and hardware, the doors offer peace of mind where the threat of flood is high. Flood Proof Steel Doors for residential applications are also now available.



**We will price match any genuine like for like quote by a UK manufacturer.**



# Shutters, Rollers and Overheads

To complement our personnel doors we also manufacture and supply conventional roller doors, high speed roller doors and sectional overhead doors. Made with the same precision and high quality materials, our rollers doors high speed and sectional overhead doors can be made to suit any Industrial, commercial and domestic requirement.

## Shutters

Our shutters offer an extra line in defence and increase the security of a wide array of commercial and domestic buildings. Our range of shutters is available in various styles and colours, guaranteed to fulfil any requirement.



## Sectional Overheads

A Sectional Overhead door is made up of separate sections rather than a single panel; they rise vertically with no loss of space in front of the opening. Our Sectional Overhead doors feature sturdy rubber weather seals on all side of the door to help keep the elements outside.

Our Sectional Overhead doors offer excellent thermal insulation with single skin and insulated options available. Our Prestige range of sectional garage doors have a 42mm thick double skin steel section that is evenly filled with CFC-free PU foam; ideal for integral garages and workshops where thermal insulation can be very important. Our Standard range of sectional overhead doors are single skinned for a competitive price advantage.



## Roller Doors

Our roller doors combine a space saving design with the convenience of an electrically operated door. The roller door is constructed from insulated aluminium laths which vertically lift and then roll to offer a compact solution for garages that want to retain the ceiling or access to the roof. These doors are available in a choice of colours and timber effect foil coatings, and are supplied complete with electric operator.

The aluminium profiles of our roller doors are filled with a CFC free polyurethane foam which provides good thermal insulation to enhance energy savings and also contributes to a quiet door action.



## High Speed Doors

Our high speed doors allow access to a building or loading bay with the minimal exposure to the outside environment and in doing so maintaining the maximum level of security and minimum level of internal temperature fluctuation.

High speed doors have many applications in industry, from loading bays to clean rooms and catering stock rooms. Our high speed doors are suitable for exposed external openings as well internal passage ways. Each door is built to withstand up to 200 operations per day. Inverter control and colour coded frame covers and hood come as optional as do the frame material and actuation devices.





# Slimline Glazed Steel Door

## Schueco – Jansen-Economy 50 door

Schueco Jansen-Economy 50 is the profile system for flush door constructions without thermal insulation. The simple profile shapes ease the task of assembly. The wide range offers room for creative and cost-effective solutions.

## Schueco – Jansen-Economy 60 door

Thanks to a greater installation depth and wall thickness, the Jansen-Economy 60 system is particularly suitable for large, heavily loaded single- and double-leaf door elements and for applications requiring higher levels of security.

## Schueco – Jansen-Economy 50/60 fire protection door

Fire protection doors and fixed glass panels up to class E120 can be manufactured quite easily and simply using the popular Economy profiles. Jansen-Economy doors have the same appearance as the Janisol fire protection system components.

## Schueco – Janisol 2 fire protection door

In a manner unlike almost any other product, Janisol 2 EI30 combines the legal requirements for structural safety with design freedom. The material properties of steel allow extremely slimline steel profiles to be assembled into strong and safe constructions. The result here is multifunctional doors that satisfy the requirements of both the architect and the client. The performance of the system has been internationally confirmed in numerous fire tests. Janisol 2 has been tested in combination with products from many different glass suppliers.

## Schueco – Janisol C4 fire protection door

Jansen has put the advantages of ceramic to good use. The result is fire protection doors that combine strength with the highest fire protection characteristics. The innovative fire protection infill panels can achieve up to an EI90 fire resistance class with an installation depth of only 70 mm.





## Schueco – Janisol window

The slender profile face widths of Janisol windows provide the space for creativity and lend the building a quite special character. Whether it is sash bar variants, arched windows or large-glazed elements: the Janisol window system is particularly suitable for use in new buildings as well as for the refurbishment of existing buildings.

## Schueco – Janisol door

Thanks to its highly resistant material characteristics, steel is perfect for highly frequented buildings such as schools, hospitals, sports centres and the like thanks.

## Schueco – Janisol HI door

Introduced for the first time by Schueco Jansen at BAU 2013, the Janisol HI system sets new standards in thermal insulation. Triple glazing doors achieve an excellent coefficient of thermal transmittance of  $UD\ 1.0\ W/m^2K$ . Thanks to the high-tech insulating bars made from glass fibre-reinforced polyurethane, the new door system achieves excellent static values and its performance has been highly confirmed in numerous tests (air/water/wind/mechanics)



# Slimline Glazed Aluminium Door

Our aluminium doors open up numerous new possibilities for the attractive design of the outside of the building envelope. Since aluminium is easy to form and shape, individual ideas and requirements can also be met. The system provides the optimum combination of design and function.

- Aesthetic design
- High degree of design freedom
- Wide range of colours
- Considerable scope for creativity
- Custom solutions possible
- Quality approved
- Doors are available with various security features: burglar resistance, fire resistance and bullet resistance

A range of designs available from non-insulated to highly thermally insulated. We supply the following systems;



Slimline is our own unique system, offering the desired features and aesthetically pleasing lines of the pedigreed titles but at a more affordable cost.

The Slimline system consists of a suite of profiles that can be fabricated into doors and screens suitable for installation into new buildings, or for the refurbishment of existing buildings, generally in the industrial or commercial building industry.

Slimline profiles are extruded from aluminium alloy 6063 T6 to comply with the recommendations of BSEN573. Polyester powder coated finishes are available to BS6496 in a wide range of colours. Anodised finishes are to BSEN12370 nGrade AA25, etch silver and bronze as standard, with a range of special anodised finishes on request. Weather stripping is produced from either extruded silicone or EPDM and fitted into grooves in the extruded aluminium profiles.







We offer a choice of options in the Schueco range, including the Schuco ADS 65 and the Schueco ADS 70. Though the ADS 70 is superior in thermal insulation both ranges offer the following key features;

- Outstanding thermal insulation
- Can be used as a multi-purpose door
- Option of integrating into building security and automation
- Matches Schüco AWS window systems
- Burglar resistance up to WK3
- Modern design provides numerous design options
- Fully concealed fittings
- Choice of surface finishes



Smart Systems offer a range of doors suitable for the architectural, commercial, public, new build and retail markets. Doors are available with polyamide thermal barrier or as aluminium/PVC-U composite frames for high performance thermal efficiency.

High security glazing, locking mechanism including security deadlock and hook bolts, dual colour options, excellent weather performance (BS6375 Pt 1) are some of the many special features of our door systems.

We offer the following product type;

### Shoptline

A non-thermal aluminium screen and door system for commercial and retail applications

### Visoline

A Standard series of profiles with thermal break, used for most traditional door and window applications in houses and industrial buildings.



Reynaers aluminium doors are robust, strong and highly secure, you can choose from hundreds of colours and finishes, ranging from a matt, gloss or metallic finish to a special low maintenance and scratch resistant Coatex finish.

We supply the following Reynaers systems;

### Vision 50

The vision 50 range is a non-insulated flush door system, offering solutions for a wide range of ground-floor or shop front constructions.. Various devices can be added, allowing the door to pivot or slide automatically.

VISION 50 is suitable for high-traffic applications in both office and retail environments and offers a range of threshold solutions to comply with all building regulations. To maximize the security level, all doors can be provided with an integrated anti-finger trap. This door system is the ideal combination of premium performance and ease of production.

### SL 38

Home comfort is one of the focus points of the SL 38 window system. Thermal performances and air tightness are key for a balanced Interior climate.

The new SL 38 offers a three level weather sealing, thus ensuring a living space without draft. The increased depth of the system now also allows for a wide range of HR++ and HR+++ glazing and by this easily reaching Uw values of 1.4W/m²K and better: similar to high end window systems like our CS 86-HI

## Slimline SBD

Our glazed systems were tested and certified to LPS 2081 Issue B. Making them the ideal choice for entrances and exits for communal residential halls, office atriums and controlled spaces.

**Features Include:**

- Thermally Broken and Non-Thermally Broken systems available.
- Anti-Tamper Glazing System.
- High Security Single & Double glazed units.
- Wide Range of Colours.
- Max Size 4.29m Wide by 2.9m High (Single Door Inc Panels).
- Burglar Resistance to LPS 2081 Issue B.





# Stock Doors

**900 x 2100 STRUCTURAL SIZES**  
SASH LOCK SET  
HINGES & FIXINGS  
STANDARD THRESHOLD  
ETCH PRIME FINISH  
IMMEDIATE DELIVERY – SUBJECT  
TO AVAILABILITY  
JACKING SCREWS

**1000 x 2100 STRUCTURAL SIZES**  
SASH LOCK SET  
HINGES & FIXINGS  
STANDARD THRESHOLD  
ETCH PRIME FINISH  
IMMEDIATE DELIVERY – SUBJECT  
TO AVAILABILITY  
JACKING SCREWS



**900 x 2100 STRUCTURAL SIZES**  
IDC 757 PANIC LATCH  
HINGES & FIXINGS  
STANDARD THRESHOLD  
ETCH PRIME FINISH  
IMMEDIATE DELIVERY - SUBJECT TO AVAILABILITY  
JACKING SCREWS

**1000 x 2100 STRUCTURAL SIZES**  
IDC 757 PANIC LATCH  
HINGES & FIXINGS  
STANDARD THRESHOLD  
ETCH PRIME FINISH  
IMMEDIATE DELIVERY - SUBJECT TO AVAILABILITY  
JACKING SCREWS

**FRAME CAPS AVAILABLE AS AN EXTRA**

**ALL STOCK DOORS SUPPLIED WITH GROMMETS AND BRICK  
FIXINGS (unless you state otherwise)**

**These sizes can be adjusted from 900 to 1100mm using our  
Unique Adjustable Frame Capping System which will turn a  
Stock Door size into a Bespoke Door size.**



# Fire Rated Steel Door

Our Fire Rated Steel Doors have been independently 3rd party tested and offer certification in excess of 6 hours. We are able to offer a large range of hardware options as the door has been tested both 'latched' and 'unlatched'. The door is manufactured from 1.5mm zintec steel as standard making it both strong and secure.

Fire Doors are manufactured to suit both internal and external applications such as:

- Warehouses
- Flat Entrances
- Server and Document Rooms
- Schools
- Vaults
- Retail Outlets
- Store Rooms
- Offices

## Features

- Offers a 6 hour fire rating in conjunction with BS 476 Parts 20 & 22
- Dense Rocksilk 45 core
- Leaf: 1.5mm or 2mm Zintec Steel
- frame: 1.5mm or 2mm Zintec Steel
- 45mm thick door leaf with a choice of either a flush or lipped astragal
- 188s Bronze seals
- Double skinned with interlocking strengthening seams
- Power Coated doors are pre-treated and primed to offer additional protection
- Vertical Anti Twist Interlocking welded channel core
- A choice of vision panels available (this will reduce rating)
- A choice of louvers available (this will reduce rating)





# Security Rated Steel Door LPS 1175 1,2 & 3

Safety and Security is increasingly becoming a concern, we offer LPS 1175 level 1, 2 and 3 tested steel doors that are available as single or double doors (outward opening). The security steel doors have been vigorously tested by the LPCB to withstand attack and unauthorised entry with heavy duty tools. A large variety of locking systems can be specified including manual and electric as well as a wide choice of glazing units, louvre panels and removable transoms are also available.

Suitable for both internal and external use, security doors are recommended but not limited to the following applications:

- Retail Outlets
- Cash Rooms
- Schools
- Portable buildings
- Industrial Units
- Warehouses
- Utility Sub Stations

## Features

- This door has been independently tested by LPCB 1175 and passed very stringent attack testing
- Single rebate minimum depth 38mm x 100mm
- Leaf 1.5 Zintec Steel
- Minimum of 5 Reinforced fixing points either side with additional 2 on the head jamb for double doors
- 45mm thick door leaf with a lipped astragal
- D Seals
- Double skinned with interlocking strengthening seams
- Minimum of 4 Reinforced, Pre treated and Protected Grade 13 stainless steel ball bearing butt hinges (complies with EN 1935:2002)
- Vertical Anti Twist Interlocking welded channel core
- Reinforced lock keep
- Dense Rockwood Core
- Frame: 1.5mm Zintec Steel – Frame depth can vary to suit apertures
- Powder Coated (pre treated and primed as standard offering additional protection)



# Flood Rated Doors

Our doors have been designed to offer protection against both flood and unauthorised entry. Available in both single and double doors (outward opening) with unique seals and hardware, the doors offer peace of mind where the threat of flood is high.

Flood doors are ideally used for external applications and are suitable for the following applications:

- Warehouses
- Store Rooms
- Electrical Sub Stations
- Retail Outlets

## Features

- Leaf: 1.5mm Galvanised Steel
- Minimum of 5 reinforced fixing points either side with additional 2 on the head jamb for double doors
- 45mm thick door leaf with lipped astragal
- Minimum of 4 Reinforced, Pre Treated and Protected Grade 13 stainless steel ball bearing butt hinges (complies with EN 1935:2002)
- Double skinned with interlocking strengthening seams
- Vertical Anti Twist Interlocking welded channel core
- Dense Rocksilk 45 core
- Reinforced lock keeps
- Frame: 1.5mm Galvanised Zintec Steel - Frame depth can vary to suit apertures with a Single Rebate Minimum Depth 38mm x 132mm
- Steel lined high grade seals
- Powder Coated (pre treated and primed as standard offering additional protection)
- Removable centre mullian available





# Flood Rated Doors

## Features

- Leaf: 1.5mm Galvanised Steel
- Minimum of 5 reinforced fixing points either side with additional 2 on the head jamb for double doors
- 45mm thick door leaf with lipped astragal
- Minimum of 4 Reinforced, Pre Treated and Protected Grade 13 stainless steel ball bearing butt hinges (complies with EN 1935:2002)
- Double skinned with interlocking strengthening seams
- Vertical Anti Twist Interlocking welded channel core
- Dense Rocksilk 45 core
- Reinforced lock keeps
- Frame: 1.5mm Galvanised Zintec Steel - Frame depth can vary to suit apertures with a Single Rebate Minimum Depth 38mm x 132mm
- Steel lined high grade seals
- Powder Coated (pre treated and primed as standard offering additional protection)
- Removable centre mullian available



# Acoustic Doors

The acoustic door has been designed to reduce 'unwanted noise' by absorbing sound and due to the insulation used can insulate any noise transference. Dependent on size and application the estimated db value offered will be between 38 and 55db. In addition to the acoustic rating offered, the doors also benefit from our design which prevents unauthorized entry.

## Suitability

- Residential Entrances
- Police Interview Rooms
- Concert Halls
- Recording and broadcasting studios
- Offices
- Computer Rooms
- Hospitals
- Studios
- Function Rooms
- Plant Rooms
- Medical Centres Rooms





## Features

This door has tested db values estimated between 38db to 50db depending on size.

Single and double rebate frames available

48mm to 55mm thick door leaf with a choice of either a flush or lipped astragal (depending on db rating required)

Minimum of 5 standard fixing points either side with additional 2 on the head jamb for double doors

Double skinned with interlocking strengthening seams

Acoustic seals will vary depending on db rating required.

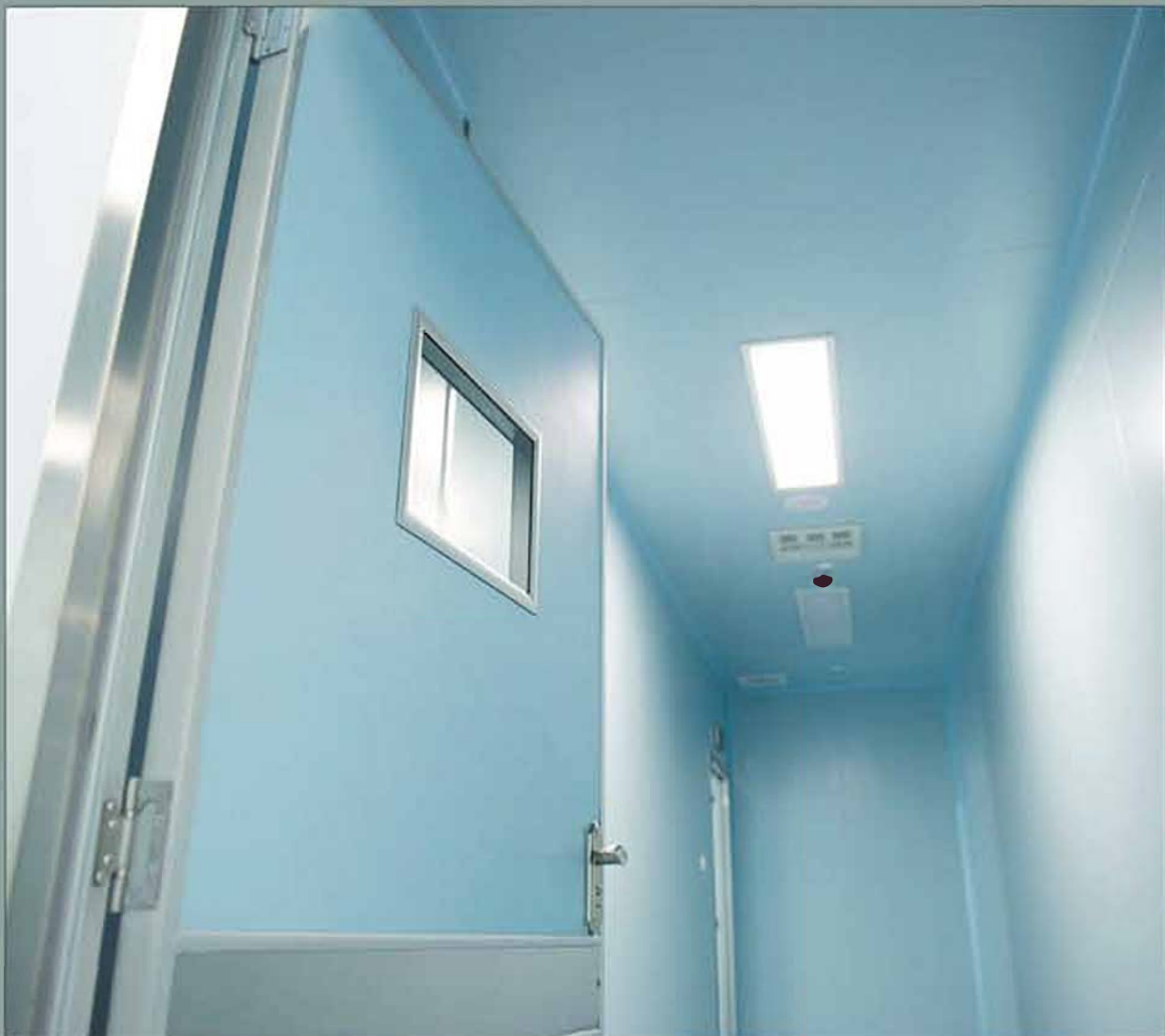
Vertical Anti Twist interlocking welded channel core

Pre treated and Protected Grade 304 stainless steel continuous hinges

Dense Rocksilks 45 core, plasterboard or e-coustiquilt (depending on db rating)

A wide range of thresholds available

Powder Coated (pre treated and primed as standard offering additional protection)



# GRP/Composite Doors

Our composite doors are aesthetically pleasing whilst offering high security, tested to PAS 23 and PAS 24 they are more than suitable for any dwelling or commercial premises. Composite doors can be made up to 6 times better insulated than timber and will not crack, bow, splinter or warp.

The composite doors come with 10 year guarantee and are built to the Secure by Design as standard. The doors are low maintenance and thermo-set manufacturing process means that the panel will not expand or contract with changing temperatures.

The water resistant composite stiles and rails completely seal the insulating core whilst the through colour skins are scratch resistant and water proof. The design makes the door dent resistant and the CFC Polyurethane core offers thermal and acoustic dampening.

Each door offers a wood-grain effect indistinguishable from timber and is available in a wide array of colours.





# Project Management & Support Services

As professionals in our field we deem it imperative to offer our experience and knowledge to accompany our products and services. We offer the total turnkey package of planning, design, project management and product fitting, maintenance and repair to all of our clients for all of their projects.

## Our services include:

- Door system planning
- Site surveying
- Package tendering assistance
- Design Consultancy and meeting-attendance
- Technical drawings and 3D modelling
- Haulage and delivery
- Product fitting, maintenance and repairs

No one understands our products better than us, we educate and train our staff to the highest levels. All of our supporting staff and technicians are certified and qualified to not only our own high standards but to the industries standards.

To learn more about what we can offer please contact us





We will price match any genuine like for like quote by a UK manufacturer.



We will price match any genuine like for like quote by a UK manufacturer.



# Launching Spring 2017 Our New

The logo features a stylized blue square icon with a white 'S' inside, followed by the text 'SGRANGE' in a large, bold, black serif font, and 'ROCKWOOL' in a smaller, black, all-caps sans-serif font below it.

**SGRANGE**  
ROCKWOOL

The logo features a stylized blue square icon with a white 'S' inside, followed by the text 'SGAcoustic' in a bold, black serif font, and 'Our Lowest Standard dB dampening to date' in a smaller, black, all-caps sans-serif font below it.

**SGAcoustic**  
Our Lowest Standard dB dampening to date

The logo features a stylized blue square icon with a white 'S' inside, followed by the text 'SGFastrack' in a bold, black serif font, and 'Order to Completion within 10 days' in a smaller, black, all-caps sans-serif font below it.

**SGFastrack**  
Order to Completion within 10 days

The logo features a stylized blue square icon with a white 'S' inside, followed by the text 'SGInsulate' in a bold, black serif font, and 'Our Lowest Standard U Value to date' in a smaller, black, all-caps sans-serif font below it.

**SGInsulate**  
Our Lowest Standard U Value to date

Design & Supply are proud to announce the arrival of the new SG Range.

We have developed our manufacturing process and material use and have turned our original SG door into the door range which caters for far more than before.

